

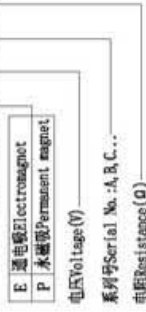
## ZHI-5016 Electromagnet



总重量 Total Weight: 170g  
应用范围: 用于电梯等  
APPLICATION: ELEVATOR etc

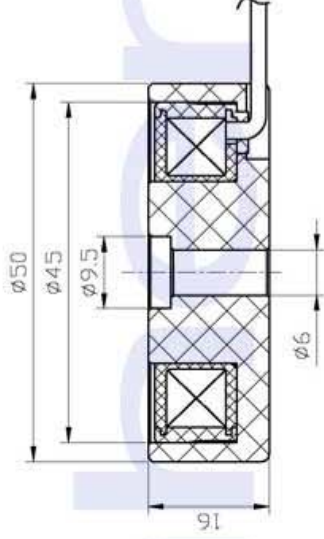
型号 Type no.

ZHI-5016E-XX A XX



ISO/TS16949 ISO9000 ISO14000  
RoHS REACH CE UL VDE TÜV

类型: 通电吸合 TYPE: ENERGIZED SUCKER



PERFORMANCE PROMETER 性能参数

单位:mm Units:mm

工作周期(%) = $\frac{\text{工作时间}}{\text{工作时间}+\text{断开时间}} \times 100\%$ Duty cycle (%) = $\frac{\text{"ON" time}}{\text{"ON" time}+\text{"OFF" time}} \times 100\%$	连续 Continuous 100%	间断 Or less 50%	间断 Or less 25%	间断 Or less 10%
最大工作时间(秒) MAX. "on" time in seconds	∞	100	36	7
瓦特(W) (20°C) Watts at 20°C	4	8	16	40
保持力 holding force (kgf)	/	/	/	50

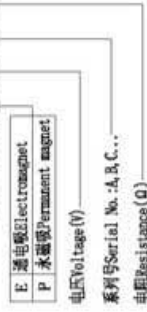
## ZHI-5030 Electromagnet



总重量 Total Weight: 340g  
应用范围: 用于机械设备等  
APPLICATION: ELEVATOR etc

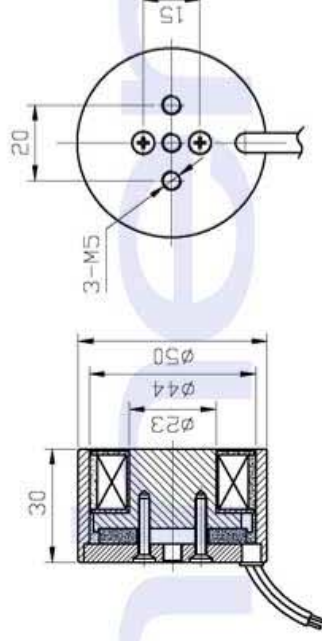
型号 Type no.

ZHI-5030P-XX A XX



ISO/TS16949 ISO9000 ISO14000  
RoHS REACH CE UL VDE TÜV

类型: 断电吸合 TYPE: DEENERGIZED SUCKER



该产品有通电吸合型 This product have engerized sucker

PERFORMANCE PROMETER 性能参数

单位:mm Units:mm

工作周期(%) = $\frac{\text{工作时间}}{\text{工作时间}+\text{断开时间}} \times 100\%$ Duty cycle (%) = $\frac{\text{"ON" time}}{\text{"ON" time}+\text{"OFF" time}} \times 100\%$	连续 Continuous 100%	间断 Or less 50%	间断 Or less 25%	间断 Or less 10%
最大工作时间(秒) MAX. "on" time in seconds	∞	200	72	14
瓦特(W) (20°C) Watts at 20°C	8	16	32	80
保持力 holding force (kgf)	55	/	/	/